

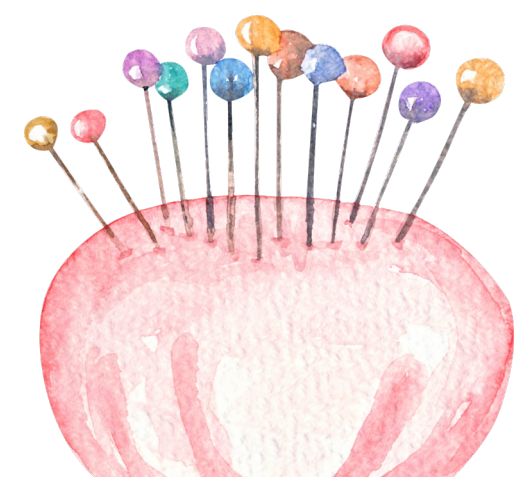
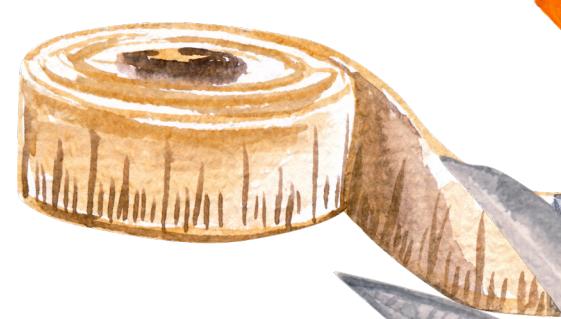
A Celebration of the Life of

Ruby Hindmoor

22nd February 1926 - 1st July 2021

**Funeral Service and Committal at Chester Crematorium
Monday 19th July 2021**





Order of Service

Entrance Music

Smile - Nat King Cole

Welcome and Opening Words

Reverend Hilary Smith

Prayer

The Lord's Prayer

Our Father who art in heaven,
hallowed be thy name,
thy kingdom come,
thy will be done,
on earth, as it is in Heaven.
Give us this day our daily bread;
And forgive us our trespasses,
as we forgive those who trespass against us.
And lead us not into temptation,
but deliver us from evil.
For thine is the kingdom,
the power, and the glory,
for ever and ever. Amen.

Tribute

Hymn

Abide with me

1. Abide with me;
fast falls the eventide;
The darkness deepens;
Lord with me abide.
When other helpers fail,
and comforts flee,
Help of the helpless,
O abide with me.

2. Swift to its close
ebbs out life's little day;
earth's joys grow dim,
its glories pass away;
change and decay
in all around I see;
O thou who changes not,
abide with me.

3. I need thy presence
every passing hour.
What but thy grace
can foil the tempter's power?
Who, like thyself,
my guide and stay can be?
Through cloud and sunshine,
Lord, abide with me.

4. I fear no foe,
with thee at hand to bless;
ills have no weight,
and tears no bitterness.
Where is death's sting?
Where, grave, thy victory?
I triumph still,
if thou abide with me.

5. Hold thou thy cross
before my closing eyes;
Shine through the gloom
and point me to the skies.
Heaven's morning breaks,
and earth's vain shadows flee;
In life, in death, O Lord,
abide with me.

Poem

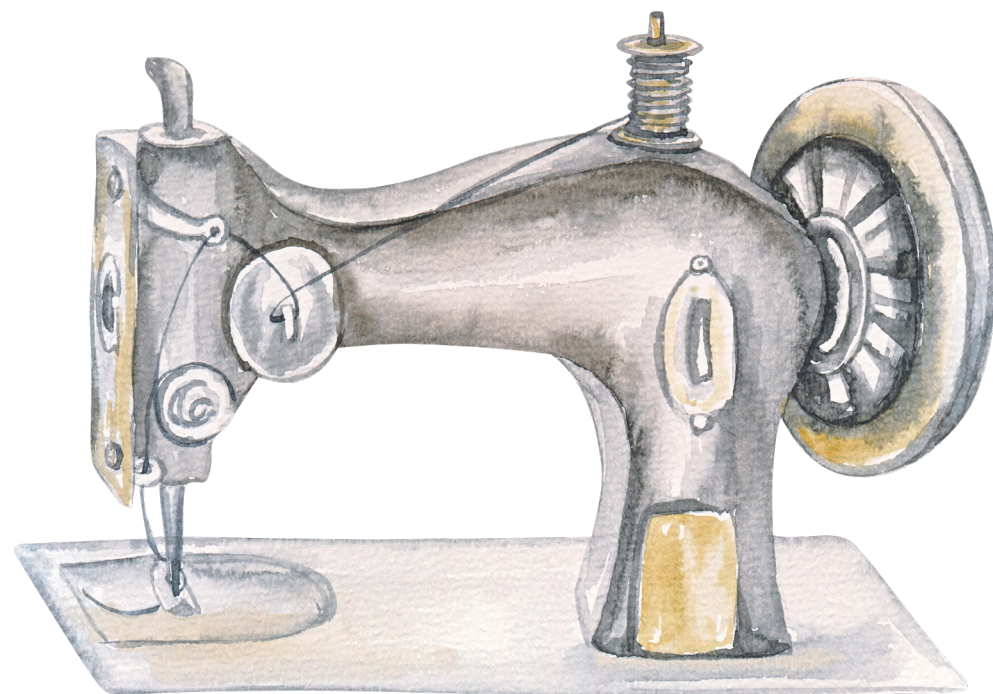
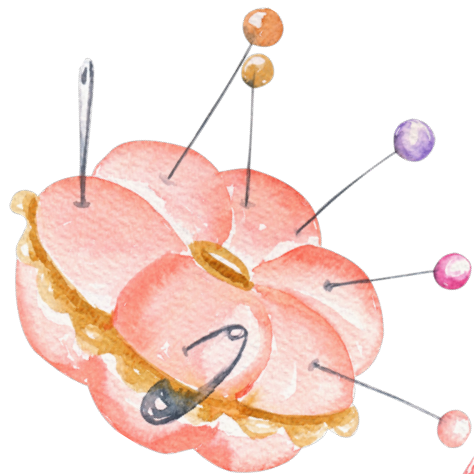
Prayer

Committal

Recessional Music

Moon River - Andy Williams







Ruby's family wish to express their sincere thanks for the kind expressions of sympathy received in their bereavement.

Donations in memory of Ruby are gratefully received in aid of Autism Together, Wirral.

**Following this funeral service you are warmly invited to join Brian for refreshments at
1 Maxwell Close, Whitby, Ellesmere Port, CH65 6SX**



Anderson Funeral Directors

11 Chester Road, Whitby Village, Ellesmere Port, CH65 9BD
0151 357 2671 | www.andersonfd.co.uk